

EcoLiner™ II Product Manual



1700 Jasper St., Unit F, Aurora, CO 80011 T 800.624.6706 F 303.364.7796 • Newstripe.com

EcoLiner™ II Manual / 4620.0517

ECOLINER™ II

TABLE OF CONTENTS

Precautionary Warning.....Page 1

AssemblyPage 2

OperationPage 3

Cleaning ProcedurePage 4

Cleaning ProcedurePage 4
(Winter Storage)

MaintenancePage 5

Parts List.....Page 6

Spray Gun Assembly.....Page 7

Images..... Page 8-9

Troubleshooting GuidePage 10

WarrantyPage 12

Thank you! For your purchase of the Newstripe **ECOLINER™ II** sprayer.

Please read over the instructions and make sure you understand operating procedures before using the unit.

Please check the serial number on your unit. This Manual is for units with serial number 1015236 and above only. For units with serial numbers below 1015236, please contact Newstripe for the correct manual.



1700 Jasper St., Unit F, Aurora, CO 80011 T 800.624.6706 F 303.364.7796 • Newstripe.com

EcoLiner™ II Manual / 4620.0517

ECOLINER™ II

ALWAYS wear safety goggles or protective eye-wear when operating the unit!



PRECAUTIONARY WARNING!

- Please read and understand all operation instructions as detailed in this manual. Failure to follow specified instructions may result in equipment damage or serious injury to personnel up to and including death!
- **DO NOT** use oil, petroleum, primer or base coat paints in the EcoLiner™™ II.
- **ALWAYS STRAIN THE PAINT.** Field marking paint often has oversized material, lumps, skin, etc., in it. If not strained, these contaminants will be drawn into the pump, shut-off valve, lines, etc., and will cause problems.
- **THIN THE PAINT BEFORE** adding it to the pail for the ECOLINER™™™. Almost all field marking paints **MUST BE THINNED** before using them with the ECOLINER™™™. These paints are typically thinned at ratios of 1:1 (One-gallon of water to one-gallon of paint) up to 3:1.
- **NEVER** perform maintenance on the machine while the system is running.
- The gas On/Off lever should always be OFF when the machine is not being used.
- DO NOT run the pump dry after cleaning.
- Please note that modifying, changing or servicing any portion of the machine, system or components outside of the procedures and parts outlined in the owner's manual will **VOID** the warranty.
- Use only in well-ventilated area.
- Always consult your Facility Safety and/or Personnel Department for specified safety protocols prior to operating this equipment.



1700 Jasper St., Unit F, Aurora, CO 80011 T 800.624.6706 F 303.364.7796 • Newstripe.com

EcoLiner™ II Manual / 4620.0517

ECOLINER™ II

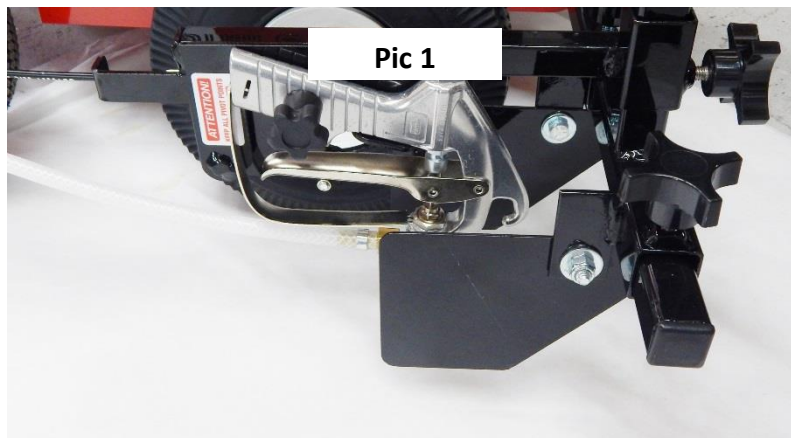
ALWAYS wear safety goggles or protective eye-wear when operating the unit!

Your EcoLiner II box should include:

- Support arm for spray gun with left & right side spray shields
- Gun mounting Bar
- Spray gun assembly
- Nozzles, 5002 (2"-3" lines) and 9005 (5"-6" lines)
- Pail paint strainer
- Owner's Manual

ASSEMBLY

1. The **EcoLiner™ II** is shipped mostly assembled. You are only required to attach the spray gun assembly and paint hose.
2. Slide Support Arm with side plates through mounting tube on front of chassis.
3. Tighten down Star Knobs.
4. Mount Spray Gun Mounting Arm on Support Arm with spray hose connection facing rearward.
5. Tighten Star Knob.
6. Line width is adjusted by raising or lowering Spray Gun and selecting the appropriate Spray Nozzle.
7. Connect Paint Hose from Pressure Valve Cross to Spray Gun. Tighten lightly with wrench.
8. **CHECK ENGINE OIL. FILL WITH HIGH QUALITY 10W30 DETERGENT MOTOR OIL.** Use high quality **10W30** detergent motor oil. Fill level is between the cross hatched markings on the dipstick with the dipstick pushed against the fill port. (Not screwed in.)



1700 Jasper St., Unit F, Aurora, CO 80011 T 800.624.6706 F 303.364.7796 • Newstripe.com

EcoLiner™ II Manual / 4620.0517

ECOLINER™ II

ALWAYS wear safety goggles or protective eye-wear when operating the unit!

OPERATION

1. Adjust spray shields to a 4" width. You may have to raise or lower the spray gun so that the machine will produce a 4" line. To stripe narrower or wider lines, select the proper spray nozzle from the selection guide and adjust the spray shields. Adjust the spray gun as needed to produce the required line width.
2. Add water or pre-mixed paint to pail.
3. Move On/Off gas lever to 'On' position.
4. Move choke lever to the 'choke' position.
5. Move the throttle lever to about the $\frac{3}{4}$ position. Turn on/off switch to 'On.'
6. Pull starter chord. Once the engine begins to run, move the choke lever to "run" position.
7. Adjust throttle to just over the $\frac{1}{2}$ position where the engine is running smoothly.
8. Turn the Pump Prime Valve, located below the pressure valve, to the open position.
9. Lift the pail lid slightly and watch the paint flow from the hose. Once there is a continuous flow from the hose, close the Pump Prime valve. The unit will now spray when the handle mounted trigger is squeezed.
10. To use Spray Gun by hand, unscrew the star knob and remove gun from mounting bracket. Engage pump lever and prime if needed.

OPERATIONAL NOTES!



- Before using paint, fill the paint pail with water to familiarize yourself with the machine.
- Select the correct nozzle for the line width required.
- Adjust side spray shields for line width and adjust spray gun height up or down as needed to achieve the line width. (**Note:** water will produce a wider line than paint.)
- Fill bucket to about 2" from the top with **PREMIXED** paint. **DO NOT place Non-thinned paint in unit, as this will clog the pump.** Most athletic field marking paint is mixed at a ratio of 1:1, one gallon of water to one gallon of paint. Some paints may be thinned more. See paint manufacturer's directions.
- You will need to use the Pump Prime valve each time you run the pail dry and when you switch to water for cleaning to remove air in the system. The spray pressure valve is initially set at the factory for maximum spray pressure. If you feel you are getting too much paint flow from the nozzles, unscrew the Pressure Valve Cap until the flow is where you would like it to be and then run the Locking ring up against the cap to maintain the setting.



1700 Jasper St., Unit F, Aurora, CO 80011 T 800.624.6706 F 303.364.7796 • Newstripe.com

EcoLiner™ II Manual / 4620.0517

ECOLINER™ II

ALWAYS wear safety goggles or protective eye-wear when operating the unit!



CLEAN UP PROCEDURE

CLEAN AFTER EACH USE

1. When your Striping job is complete, pull the paint return hose & prime valve hose out of the lid and point them towards the ground behind the machine or in a separate pail.
2. Remove the pail lid and set aside. Pull out suction hose and place to side of machine or in a separate pail.
3. Empty pail of unused paint, or remove pail completely and cover for the next time you stripe.
4. Place another empty pail on machine.
5. Wipe off or rinse off suction hose, screen, return hose, pump prime hose and pail lid.
6. Remove nozzle cap, nozzle, and valve seat and put in container of water to soak.
7. Place 2-3 gallons of clean water in the pail. Place pick up tube back in pail. Leave return hose out of pail. This allows you to flush all hoses of paint. Start engine. Use Pump Prime valve to prime pump and activate control lever. **CAREFUL:** Return hose will 'jump' from paint pressure. Run until spray runs clear.
8. Clean nozzle parts that have been soaking and reassemble on spray gun.
9. Clean and rinse exterior of machine. Use soapy water (dish washing detergent or Simple Green) once each week to thoroughly clean pump. Add soap to 2-3 gallons of water, run machine and let it circulate back to pail and then empty.

CLEANING PROCEDURE FOR WINTER (FREEZING) STORAGE

1. Clean as instructed in cleaning procedure and then place ½ bottle of pump protector in pail.
2. Place spray knob in prime position and run pump until pump protector is seen flowing from return hose.
3. Turn spray knob to spray position and trigger gun until pump protector sprays from gun.
4. Turn spray control knob to prime position, turn off pump and trigger spray gun to release pressure.
5. Remove as much fuel from the engine gas tank as you can. Run engine until it runs out of gas.
6. Turn Spray knob to prime position.
7. Disconnect paint hose from pump and gun then, drain hose.
8. Unit may now be stored in freezing temperatures.
9. Drain and change engine oil in the spring.



1700 Jasper St., Unit F, Aurora, CO 80011 T 800.624.6706 F 303.364.7796 • Newstripe.com

EcoLiner™ II Manual / 4620.0517

ECOLINER™ II

ALWAYS wear safety goggles or protective eye-wear when operating the unit!

MAINTENANCE

ITEM	CHECK	MAINTENANCE ACTION
Engine oil level	Prior to every use	Change engine oil after first 20 hours of operation and then every 100 hours thereafter.
Paint Pail/Tank	After every use	Clean paint pail/tank hoses and nozzle
Hoses and pump	After every use	Run soapy water through pump and hoses for additional cleaning
Wheels	Check air level before each use	Fill with air as needed. Grease weekly.
Handles	Monthly	Check handles for tightness to frame.
Engine air filter	Monthly	Clean monthly. Replace every 4 months

****For additional instructions please contact Newstripe, Inc. at 800-624-6706**



1700 Jasper St., Unit F, Aurora, CO 80011 T 800.624.6706 F 303.364.7796 • Newstripe.com

EcoLiner™ II Manual / 4620.0517

ECOLINER™ II

ALWAYS wear safety goggles or protective eye-wear when operating the unit!

PARTS LIST

Item	Description	Part Number
1	Chassis	10004610
2	Engine, Briggs & Stratton XR550	10004707
3	Air filter element for engine (Not Shown, Briggs & Stratton P/N)	796970
4	Wheel assembly (4 required)	10000012
5	Handle, weldment	10003469
6	Handle support braces (2)	10004612
7	Control cable	10000820
8	Control lever	10002951
9	Hose, paint	10000695
10	Hose, pressure	10004468
11	Hose, suction	10004467
12	Filter, suction hose (Not shown)	10002842
13	Hose, Re-circulating	10003692
14	Hose, Pump prime valve return	10003692
15	Spray gun mounting arm	10004651
16	Spray gun assembly	10001949
*	See Spray Gun Assembly on Page 7 for breakdown of part numbers	
17	Spray gun support arm	10003550
18	Pivot, Right	10001229
19	Pivot, Left	10001228
20	Spray shields (2)	10003562
21	Star knobs, common (5)	10000007
22	Cable adjuster with nut	10000018

Item	Description	Part Number
23	Cable stop	10001577
24	Pressure valve adjusting cap	N/A
25	Locking ring	N/A
26	Pressure limiter collar	N/A
27	Pressure Valve	10003478
28	Brass T fitting, ½"	10004111
29	Reducer, ½" – ¼"	10002481
30	Brass elbow	10004131
31	Pump prime valve	10000233
32	Brass elbow	10000159
33	Brass cross	10000235
34	Plug	10000113
35	Ball seat fitting	10000731
36	Belt guard	10004617
37	Drive Belt, 3L200 (Not shown)	10003369
38	Pump, diaphragm	10003367
39	Pump elbow fittings	10004459
40	Bearing, pump shaft (2) (Not Shown)	10003131
41	Pump shaft (Not Shown)	10003365
42	Gun mount star knob	10004480
43	Pail	10002838
44	Lid EcoLiner™ II & SP assembly, 5-gallon pail	10002827



1700 Jasper St., Unit F, Aurora, CO 80011 T 800.624.6706 F 303.364.7796 • Newstripe.com

EcoLiner™ II Manual / 4620.0517

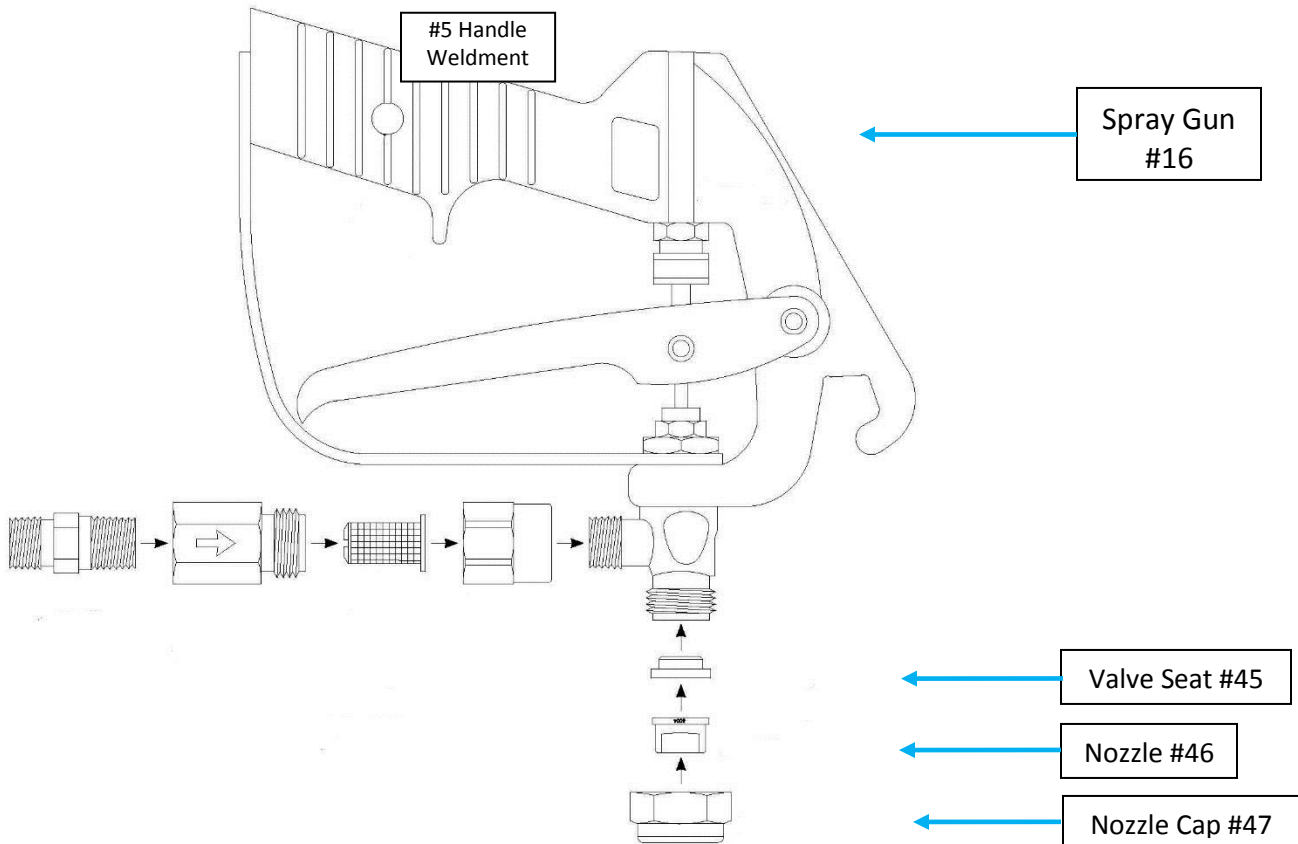
ECOLINER™ II

ALWAYS wear safety goggles or protective eye-wear when operating the unit!

SPRAY GUN ASSEMBLY (Item 10001949)

<u>Item</u>	<u>Description</u>	<u>Part Number</u>
45	Valve Seat	10000136
46	Nozzle	Select nozzle below
47	Nozzle Cap	10001890

SELECT NOZZLE FOR APPLICATION		
<u>Item</u>	<u>Description</u>	<u>Part Number</u>
5002	2" Line	10001891
8005	4" -5" Line (Heavy Turf)	10003493
8004	4"-5" Line (Turf/Asphalt)	10001893
8002	4"-5" Line (Concrete)	10001892
0505	5"-6" Line	10001894

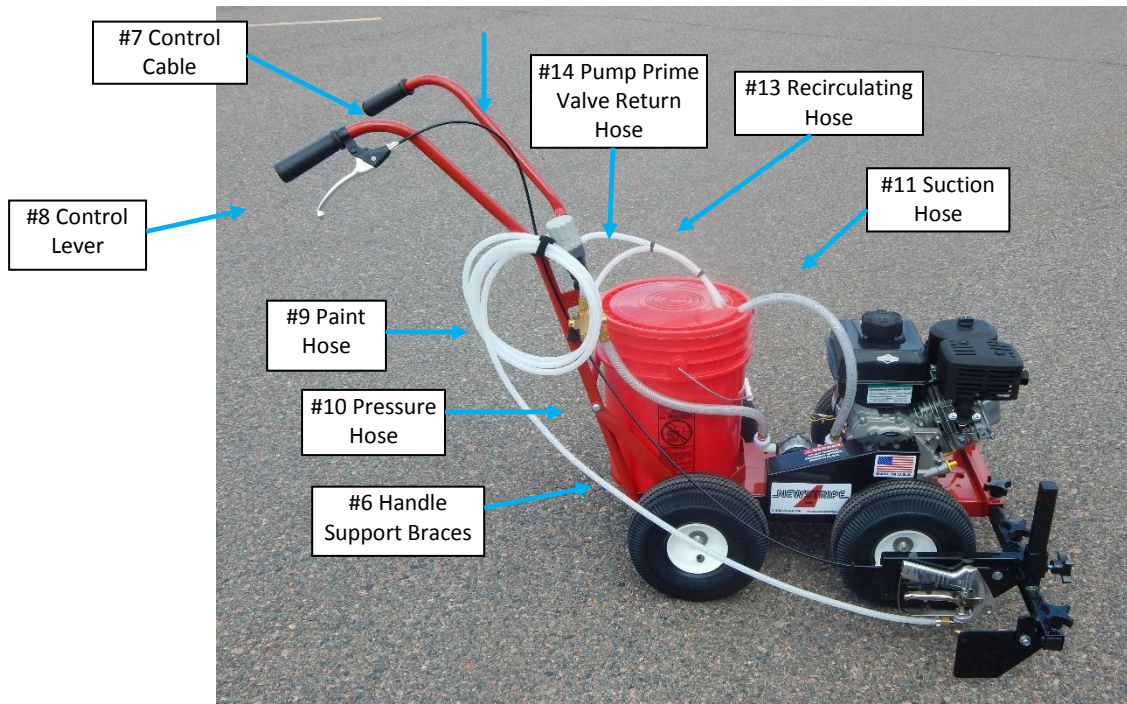


1700 Jasper St., Unit F, Aurora, CO 80011 T 800.624.6706 F 303.364.7796 • Newstripe.com

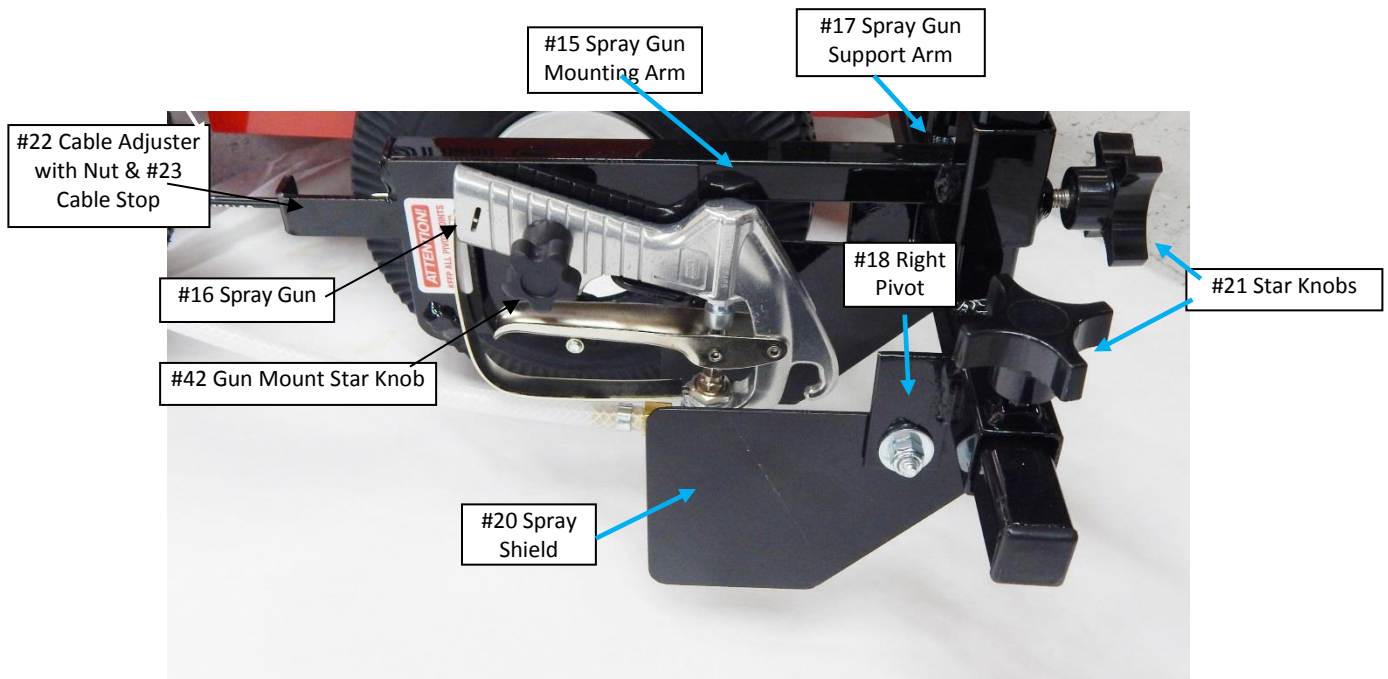
EcoLiner™ II Manual / 4620.0517

ECOLINER™ II

ALWAYS wear safety goggles or protective eye-wear when operating the unit!



Pic 2



Pic 3

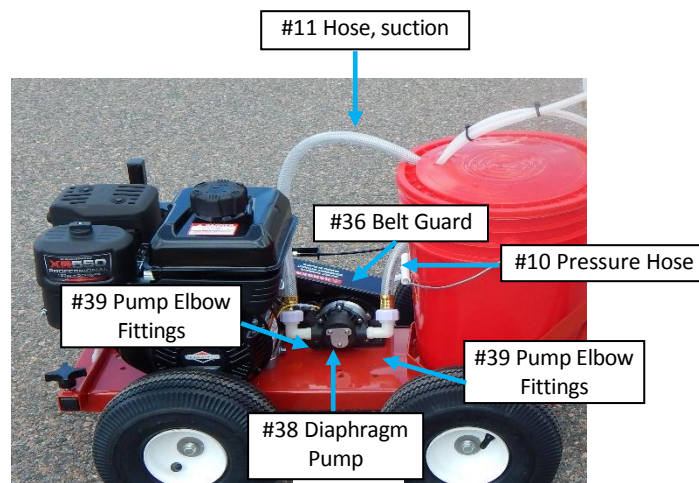
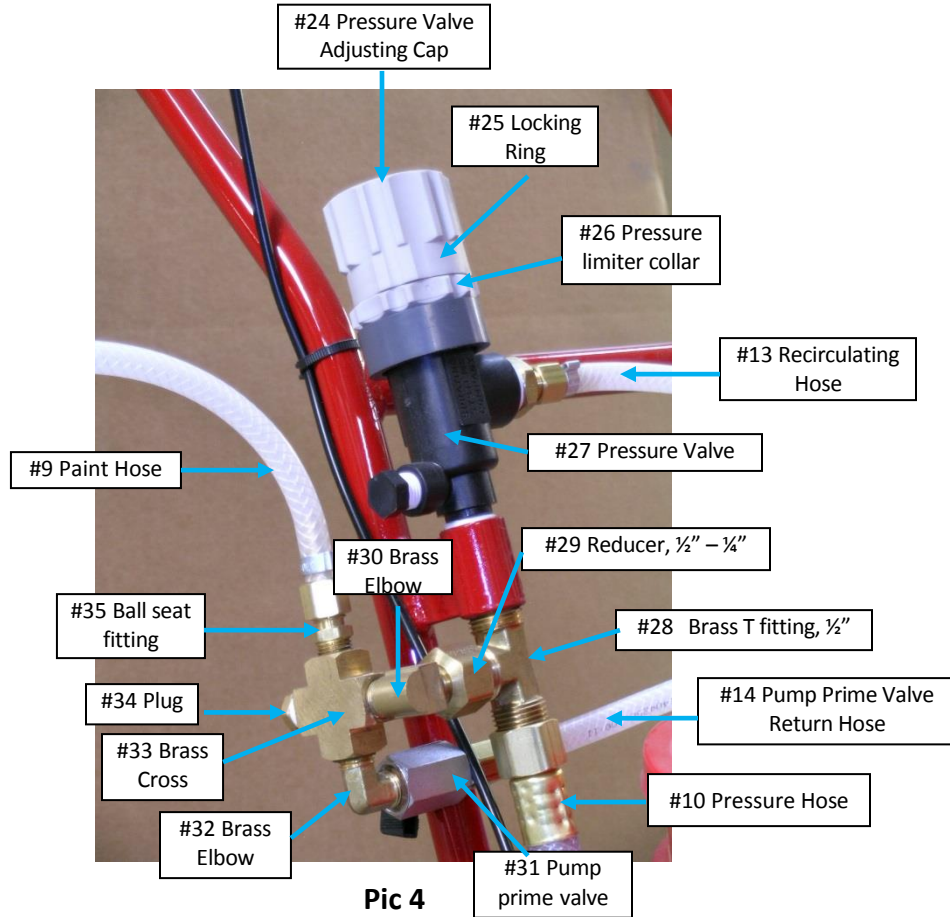


1700 Jasper St., Unit F, Aurora, CO 80011 T 800.624.6706 F 303.364.7796 • Newstripe.com

EcoLiner™ II Manual / 4620.0517

ECOLINER™ II

ALWAYS wear safety goggles or protective eye-wear when operating the unit!



1700 Jasper St., Unit F, Aurora, CO 80011 T 800.624.6706 F 303.364.7796 • Newstripe.com

EcoLiner™ II Manual / 4620.0517

ECOLINER™ II

ALWAYS wear safety goggles or protective eye-wear when operating the unit!

TROUBLESHOOTING GUIDE

PROBLEM	POSSIBLE CAUSE	REMEDY
Pump will not prime	Air in pump system	Open pump valve and check flow from hose into pail. When flow is continuous. Close valve.
Pump will not prime after relieving air in system	Pump is probably clogged with paint	Disconnect supply and discharge hoses. Clean out hoses. Pour hot water into opening of pump and let soak. Reconnect hoses and start pump again.
Pump won't prime due to clog in the system	Spray system not properly cleared after previous use.	If hot water alone does not remove clog, pour liquid dish soap or the "Simple Green" product into the pump inlet. Jog the pump by pulling the starter cord several times with engine off to get the soap in to the pump and let it soak 15-30 minutes, then try pumping water. The pump does not need to be rinsed of all the soap as the soap will mix easily with the paint. If still not working call factory. Disassembly of pump will VOID the warranty.
Pump will not run	Loose or broken drive belt	Inspect, adjust or replace. Belt should deflect approximately ½" between pulleys.
Paint leaving nozzle in stream, not spraying	Paint too thick	Thin Paint
Pressure too low		See step #4 in operating instructions
Spray Inconsistent	Obstruction in nozzle	Remove nozzle screen. Clean or replace.
	Obstruction on pick up tube screen or clogged	Remove pick up tube and filter screen. Filter paint before putting in pail. Clean screen to remove clogs.
Spray pattern too narrow or uneven	Wrong nozzle or spray head height is incorrect	Adjust spray head height up or down. Nozzle slot must be crosswise to the fun body.
	Paint is too thick	Thin Paint
Paint drips after being shut off	Control cable out of adjustment	Check cable at shut-off valve. Adjust or replace Disassemble and clean, or replace
	Clogged or worn spray control valve	
Paint drips after being shut off	Faulty control lever	Replace



1700 Jasper St., Unit F, Aurora, CO 80011 T 800.624.6706 F 303.364.7796 • Newstripe.com

EcoLiner™ II Manual / 4620.0517

ECOLINER™ II

ALWAYS wear safety goggles or protective eye-wear when operating the unit!

WARRANTY – 18 MONTH

NEWSTRIPE, INC., WARRANTS TO THE ORIGINAL PURCHASER, FOR 18 (EIGHTEEN) MONTHS AFTER DATE OF PURCHASE, THAT THE EQUIPMENT* HEREBY SOLD SHALL BE FREE OF DEFECTS IN MATERIALS AND WORKMANSHIP. THIS WARRANTY DOES NOT EXTEND TO ANY DAMAGE OR MALFUNCTION RESULTING FROM MISUSE, NEGLIGENCE, ACCIDENT, IMPROPER OPERATION, OR NORMAL WEAR AND TEAR.

Damage incurred in shipment from Newstripe, Inc. to the customer is the total responsibility of the carrier. The CUSTOMER MUST NOTE DAMAGES on the Bill of Lading of Trucking Company or Railroad; and Newstripe, Inc. will furnish to the customer the cost of parts and labor. The customer can then bill the common carrier for the damages by placing his signature on the documents.

The Newstripe, Inc. obligation under this warranty and any implied warranties is limited to replacement or repair of defective parts of its manufacture without charge for 18 (Eighteen) months from date of purchase. For service under this warranty, buyer shall ship the defective part or parts of the equipment, transportation prepaid, to Newstripe, Inc. together with a written description of any claimed defect and proof of purchase date of the materials being returned. **Prior to retuning any part or machine, the CUSTOMER must obtain a Return Materials Authorization number. Call 1-800-624-6706.**

***Components not manufactured by Newstripe, Inc. such as engines, compressors, pumps, and transaxles are furnished with their respective manufacturer's warranties only. Where Newstripe elects to extend manufacturers' warranties, the warranty shall cover up to 100% of the cost to repair or replace materials and parts for the first 12 months of ownership, excluding labor. Extension of any manufacturers' warranty for these components is at the sole discretion of Newstripe, Inc. and does not include wearable parts and consumable components from normal wear and tear.**

The responsibilities described above are the only responsibilities of Newstripe, Inc. under this written warranty or any implied warranty, and may be exercised only within 18 (Eighteen) months from the date of purchase. In no event shall Newstripe, Inc. be liable for incidental or consequential damages and no person had any authority to bind it to any representation or warranty, not be responsible for work done, materials furnished or repairs made by others without its' specific written authorization.

THIS WARRANTY SHALL BE IN LIEU OF ANY AND ALL OTHER WARRANTIES, EXPRESSED OR IMPLIED, INCLUDING ANY WARRANTIES OF MERCHANTABILITY OR FITNESS FOR A PARTICULAR PURPOSE, AND THERE IS NO OTHER REPRESENTATION OR WARRANTY OF ANY KIND WITH RESPECT TO THE GOODS SOLD HEREBY EXCEPT AS SET FORTH HEREIN. IT IS EXPRESSLY AGREED THAT THIS WARRANTY SHALL BE LIMITED TO THE ADJUSTMENT, REPAIR OR REPLACEMENT OF PARTS AND THE LABOR AND SERVICES REQUIRED THEREBY. IN NO EVENT, INCLUDING ANY CLAIM FOR NEGLIGENCE, SHALL NEWSTRIPE, INC. BE LIABLE FOR INCIDENTAL OR CONSEQUENTIAL DAMAGES.

Sincerely,
Newstripe, Inc



1700 Jasper St., Unit F, Aurora, CO 80011 T 800.624.6706 F 303.364.7796 • Newstripe.com

EcoLiner™ II Manual / 4620.0517